



**WORLD'S FIRST  
WARRANTED  
WATERPROOF  
STRUCTURAL WALL**



**ELIMINATE THE TIME FOR BACKFILLING WITH DINCEL 275MM**

**THE NEXT LEVEL.**

## DINCEL 275MM APPLICATIONS

Being a maintenance-free, waterproof and airtight construction solution, the benefits for residential, commercial, civil and infrastructure applications makes this profile ideal for:

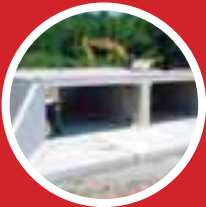
- Columns, blades, party-corridor-facade walls
- Lift and stairwells up to 60 storeys
- Waterproof basements
- Tanks – water, sewer, oil, grain and petrol
- Retaining walls – sea walls, flood levees, erosion, contamination control in soils for chemicals
- Culverts for roads, railways, drainage, service ducts



Residential



Commercial



Civil/Infrastructure

## WORLD'S FIRST WARRANTED WATERPROOF STRUCTURAL WALL

- ✓ MEETS COMPLIANCE AND SAFETY
- ✓ WATERPROOF CERTIFIED
- ✓ FIRE RATED & TESTED
- ✓ CODEMARK CERTIFIED
- ✓ HIGH CHEMICAL RESISTANCE
- ✓ LIGHTWEIGHT POLYMER PANELS
- ✓ FAST INSTALLATION
- ✓ IMMEDIATE BACKFILL WITH 275MM
- ✓ 'SNAP-LOCK' TECHNOLOGY
- ✓ PREVENTS MOULD AND MILDEW
- ✓ LESS REINFORCING
- ✓ NO AIR VOIDS
- ✓ INCREASES CONCRETE STRENGTH
- ✓ EASY TO RENDER OR CLAD
- ✓ ARCHITECTURAL DESIGN ALTERNATIVE



### INDUSTRY FIRST: BACKFILL IMMEDIATELY WITH DINCEL 275MM

**DO YOU KNOW THAT 3 METRE HIGH DINCEL 275MM HAS THE ABILITY TO BE BACKFILLED SOONER THAN YOU THINK?**

Have you experienced wet weather problems whilst waiting for the backfilling to take place? Do you normally have to wait 4 weeks, 8 weeks or 12 weeks when backfilling at basement walls following bulk excavation?

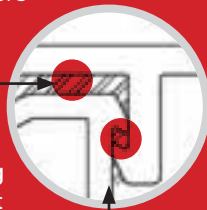
The diagram on the left demonstrates the typical load on a basement wall. If support arrangement as demonstrated is adopted, a correctly braced empty Dincel 275mm can be backfilled against immediately with uncompacted filling following installation. Alternatively, concrete filled (min 25mpa) Dincel 275mm, only braced at the footing and at the position of formed deck over, can be backfilled with compacted filling after only 24 hours.



# DINCEL 275MM PROFILE

## WHAT MAKES DINCEL 275MM WATERPROOF?

- Patented innovative ring form allows minimum 180mm concrete slump in a single pour up to 4.5 metres.
- 180mm concrete slump is essential to:
  - Improve concrete flow and compaction
  - Eliminate the possibility of air voids
  - Satisfy concerning engineers
- 180mm slump concrete slurry
- No additional waterproofing membrane required (except at the wall/footing junction)
- Patented Dintel bars and cement slurry ensures that snap joint is waterproof



Waterproof joint

## DINCEL 275MM PERFORMANCE TEST

For speed of construction and performance.

- 4.5m high x 1.1m wide sample
- Unreinforced, hollow panels
- 210mm slump, 10mm stone, 20mPa concrete
- Commercial boom pump at full pressure
- 1.4m<sup>3</sup> of concrete placed in 2 min. 20 sec.
- Maximum surface deflection = 6mm
- No concrete spillage
- Tight, vertical Dintel panel joints



Hollow panels



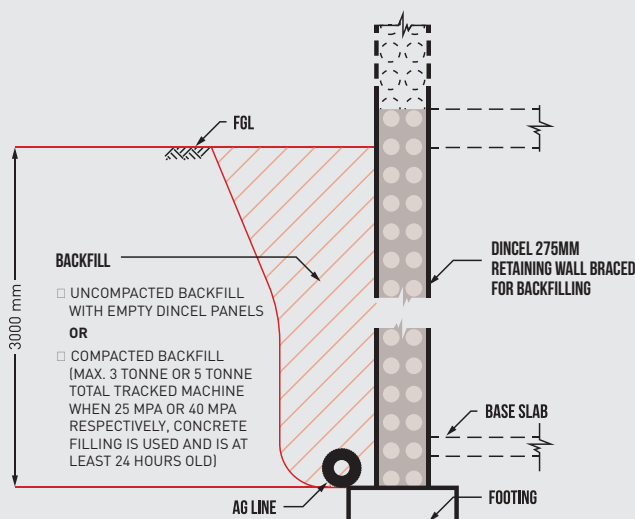
High flow/high pour



Minimal deflection

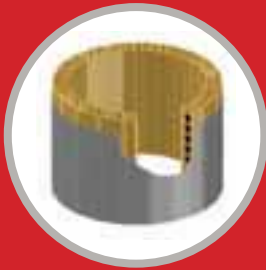


Concrete core sample



## DESIGN, SUPPLY AND INSTALL DINCEL 275MM WITH A WATERPROOF WARRANTY

DinCEL's qualified engineers and certified installers offer the convenience and surety of a single source supply, technical support and compliance. When DinCEL manage your basement and tank design, supply and installation, we will also provide you with a full waterproof warranty which is currently unavailable in this market.



Design



Supply



Install



Waterproof Warranted

DinCEL 275mm wall panels are waterproof at the joints under 6m of water head pressure without the use of waterproof membranes.



## DINCEL WALLS ARE CODEMARK CERTIFIED

DinCEL has been assessed and issued with a CodeMark Certificate of Conformity for Type A, B & C construction covering the following;

- For all internal/external wall applications
- Openings and penetrations (i.e. Fire collar use directly onto Dincel Wall and Dincel Wall abutting to a non-Dincel wall)
- Fire rated (90-240 minutes)
- Suitable for bushfire prone areas (BAL Low to BAL FZ)



**AUSTRALIA**  
**HEAD OFFICE & MANUFACTURING**  
**NEW SOUTH WALES**  
 101 Quarry Rd, Erskine Park NSW 2759  
 T: +612 9670 1633 F: +612 9670 6744  
 E: construction@dincel.com.au

**VICTORIA**  
 P: 1300 DINCEL  
**QUEENSLAND**  
 P: 1300 DINCEL

[WWW.DINCEL.COM.AU](http://WWW.DINCEL.COM.AU)

1300 DINCEL

**THE NEXT LEVEL.**